

CREATE A FOUNDATION FOR THE MULTI-SPECIES FLOURISHING BY LEARNING FROM, WITH AND FOR NATURE TO CATALYSE A PARADIGM SHIFT TOWARDS PEACEFUL AND SUSTAINABLE COEXISTENCE FOR ALL THROUGH LISTENING, UNDERSTANDING, EMPATHY AND CARE.



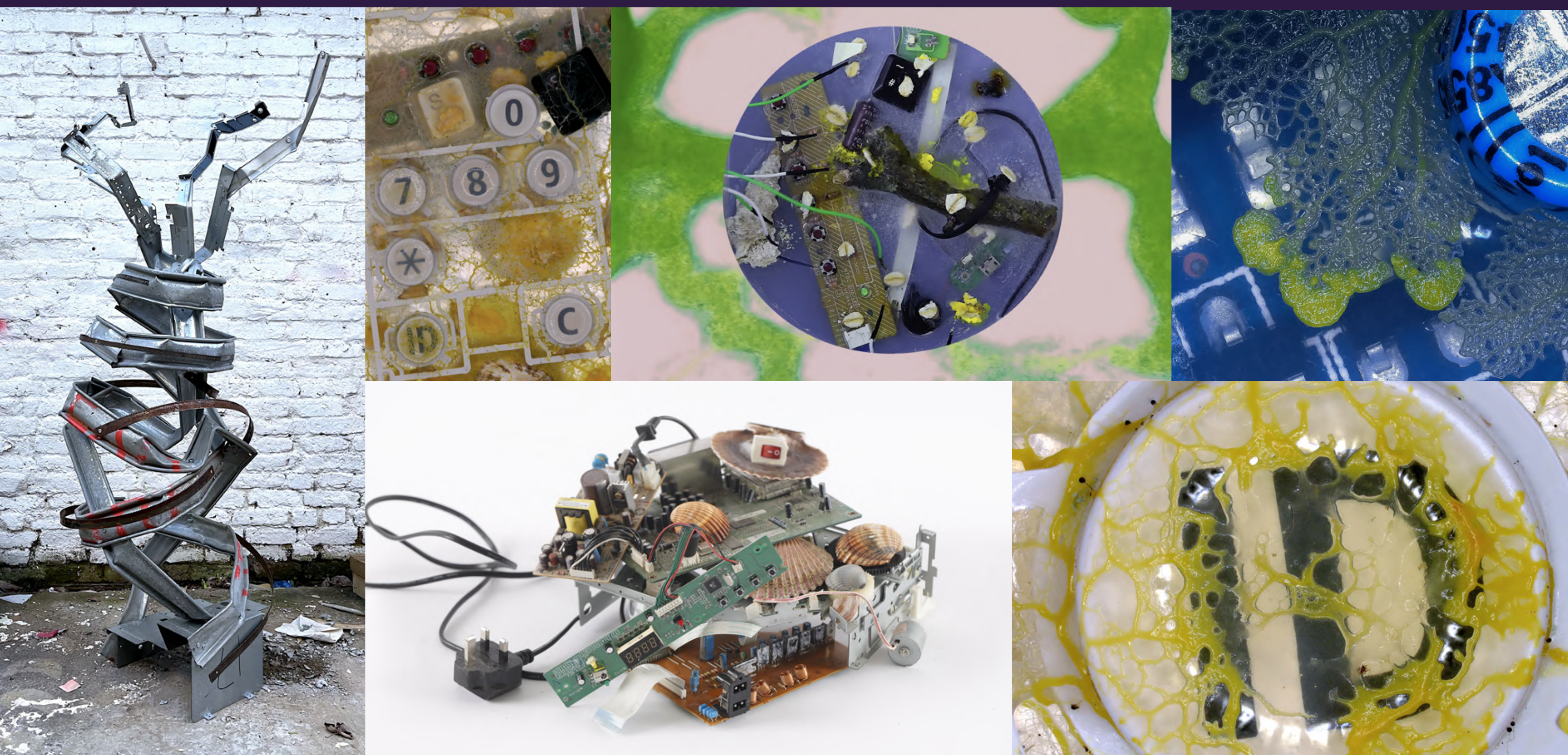
NeoMeta

NEW: Greek νέος (*néos*) **BEYOND:** Greek μετά (*meta*)

julia shu

MA ART AND SCIENCE, 2022 - 2024
CENTRAL SAINT MARTINS, UAL

"...half natural, half technological; half and half is good."



ARTIST STATEMENT

NeoMeta* (Julia Shu) is a transdisciplinary multimedia artist and experimental researcher. Through immersive audiovisual spatial art and experimental fieldwork, I explore the interconnectedness of life and non-life within the endless entropy of the universe, while unfolding transdisciplinary and transcultural collaboration. NeoMeta strives to build a foundation for the multispecies flourishing and reimagine our, human place in the interconnected web of life, catalysing a paradigm shift towards peaceful and sustainable coexistence for all through listening, understanding, empathy and care.

Rooted in media arts, my art/science practice combines diverse range of disciplines including installation & sculpture, computational & digital arts, performance, experimental sound, microbiology and beyond. By blending physical and digital, real and imagined realms, I create multi-sensory, interactive installations, live performances and mixed realities, treating living, found, and discarded as equal collaborators. Learning from living systems, my art & research examine the boundless potential of regeneration in Nature to ignite a spark of hope for a future where all beings such as animals, plants, machines, virtual entities and others can flourish in a harmonious synergy within diverse ecosystems. Furthermore, NeoMeta's immersive experiences encourage reflection on the coexistence of scientific and indigenous knowledge, fostering empathy and kindness towards nurturing a just world for all.

As an advocate of interdisciplinary practice, NeoMeta has participated in art/science events and shows at Zurich University of Arts, Taipei National University of Arts, Creative Computing Institute (CCI), London College of Fashion (LCF) and Central Saint Martins (CSM), UAL. Recently, I was selected for the Mattering Life Scientist in Residence Programme, as a part of STADHI – a research, education and knowledge exchange collaboration between Tokyo Institute of Technology and Living Systems Lab at CSM (Mar 2024); and undertook a Transcultural Collaboration international semester programme by shared campus (Aug-Nov 2023) focused on transcultural mindset, collaboration and open-outcome transdisciplinary experimentation around the topic of Protection. Previously, I became part of the Climate Emergency Network which sparked my interest in the nonhuman agency and resulted in my first installation from discarded tech & repurposed metal at the THE GREEN HOUSE exhibit, Lethaby Gallery to mark Earth Day 2023 (April 2023). Apart from that, I continued exploring the role of technology in post-human futures and was selected for the RENDERING UTOPIAS intensive Course & Symposium by Feminist Internet & CCI, UAL (Feb 2023).

All in all, NeoMeta delves into realms of art and science, nature and technology focusing on nature's self-regulating ability to find the balance in between. Learning from, with and for nature, my works lie at the intersection of transdisciplinary research and practice and aim to create multisensory, universal metaphors that reconnect human, non-human, living, and non-living beings to nurture a harmonious multi-species world.

***NeoMeta:** my artist name embodying a fusion of artistic expression & scientific inquiry ('neo', from the Greek (νέος) – "new"; 'meta' (μετά) – "beyond", "transcending").

MANIFESTO

NeoMeta is on a mission to give a greater sense of meaning and connectedness, focussing on the beauty of the moment that we have in the endless entropy of the universe. Like a feeling, we get in front of the immensity of nature. To find the balance in-between...

- 0. Zero & One: To communicate with Nonhuman Others, like with like-minded Us;
- 1. Nothing & Everything: Exploring infinity to reach a point of singularity;
- 0. Art & Science: To research at the intersection of disciplines;
- 1. Entropy & Metaphysics: Searching for balance in energy and matter;
- 0. Yes & No: Conditioning the unconditional to find reason in irrationality;
- 1. Human & Machine: Synergy of machine capability and human consciousness.
- 0. Line & Circle: To find new points of intersection, creating transdisciplinary knowledge;
- 1. Individual & Collective: Aiming towards interspecies advocacy in the NatureCulture;
- 0. Real & Imagined: To explore human perception and bring curiosity about the world;
- 1. Happy & Sad: To inspire emotions & feelings as posed to ambivalence / ambiguity;

Embracing the infinity between 0 and 1...

META_SCAPES A Landscape Beyond Reality

Responding to the query "WHERE YOU FROM?", this installation challenges conventional narratives, delving into the complexities of personal and collective belonging. It redefines the boundaries of identity and home through a transformative exploration of discarded, preserved, and relived landscapes. What is the value of the untold stories and fragmented identities within the context of a globalized world? By framing the unframed and arranging found objects, it weaves together visual narratives that reflect themes of displacement, longing, and the multifaceted nature of being human. Through (im)prints of cultural influences and geopolitical events, it prompts viewers to ponder the universal question: "Where is my home?" This evocative journey invites introspection, blurring the lines between sadness and resilience, and ultimately celebrates the human spirit's capacity for adaptation and renewal.

POP-UP INSTALLATION FROM DISCARDED TECH | MIXED MEDIA COLLAGES FROM FOUND OBJECTS & MEMORIES | PROJECTION FILM

Installation + Soundscape: Video Rec

vimeo.com/neometa/metascapes-installation

Fluorescent Paint on Tech Parts + Light

Meta_scape: Installation
Mixed-media installation from Found & Discarded Tech



Meta_scape: Media Art
Video Projection of the Land Pop up installation



WYF Thu 11.01.24, 6-9pm
Fri 12.01.24, 10am-4pm
Safehouse, Peckham

META_HOME Hopeful Nostalgia

Wordless memories that journey through the intricacies of migration, cultural displacement, and the enduring quest for belonging. Within this immersive fusion of physical and digital realms lies an exploration of my narrative – a tapestry woven from Ukrainian heritage, refugee experiences... and a feeling of hope that we all are equal citizens of the globe. This work combines media art, installation, prints on envelopes and embroidery of the Ursa Major & Minor star constellations on the discarded screens; guiding us home, just like the North star... Delving deep into the layers of symbols and traditions, 'MetaHome' invites reflection on the fluidity of identity and Belonging. Through this odyssey of artistry, one embarks on a transformative exploration of what it means to call a place 'home' and how the essence of identity can shift and morph across time and space.

PRINTS ON ENVELOPES | EMBROIDERY ON THE DISCARDED SCREENS | INSTALLATION | DIGITAL MEDIA | COLLECTIVE MEMORY FILM

Belongings: Time-based Media Art

vimeo.com/neometa/belongings

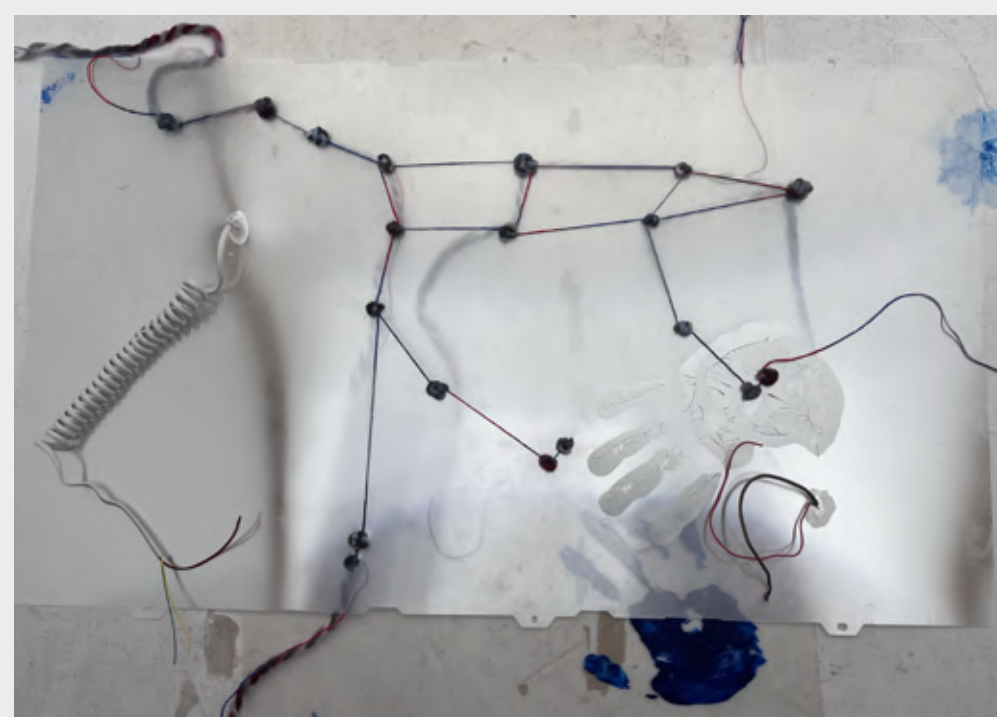
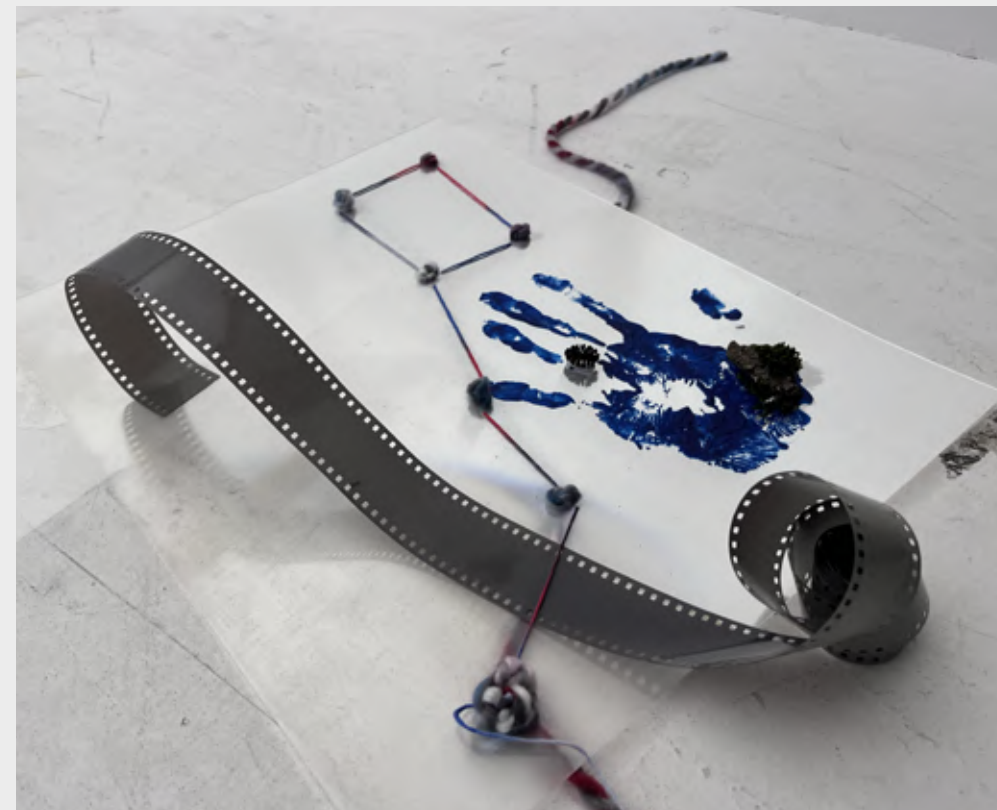
Prints on envelopes, Vol-1(5)

MetaHome Installation: Video Rec

vimeo.com/neometa/metahome-installation



MetaHome:
Embroidery On Film Sheets from the Discarded Monitors



MetaHome:
Prints on envelopes, Vol-2, 5 unique items



META_NATURE A Space In-Between

Interactive, living and growing installation exploring the alternative future of NatureCultures through the critical post-humanism lens. Growing slime on microchips. Exploring interspecies communication and bioacoustics through capacitive sensing. It showcases a dynamic symbiosis between living organisms and electronics, inviting observers to explore the unheard narratives of the slime mould and plants with discarded electronics. Through tactile engagement, the project facilitates an immersive experience in interspecies communication, encouraging a deeper understanding of the evolving relationship between the living and non-living.

Observe an evolving symbiosis of living organisms and electronics. Listen to the multilayered narratives of those unheard: the slime, the plants, the discarded. Engage in the interspecies communication between living and non-living through touch.

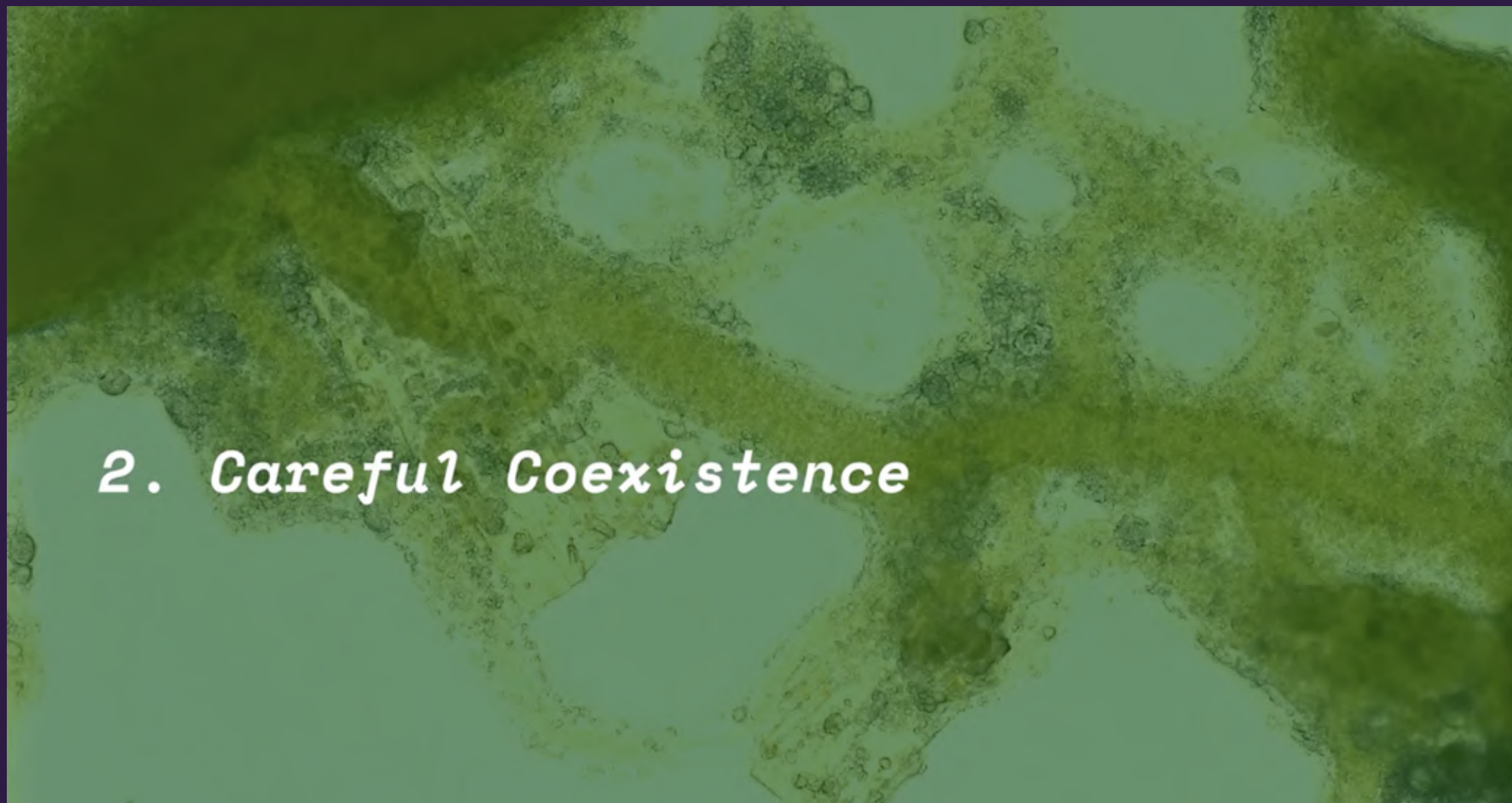
SLIME MOULD ON DISCARDED TECH | CAPACITIVE TOUCH SENSING | BIOACOUSTICS | MICROSCOPY | INSTALLATION | FILM

MetaNature: Film + Soundscape-2

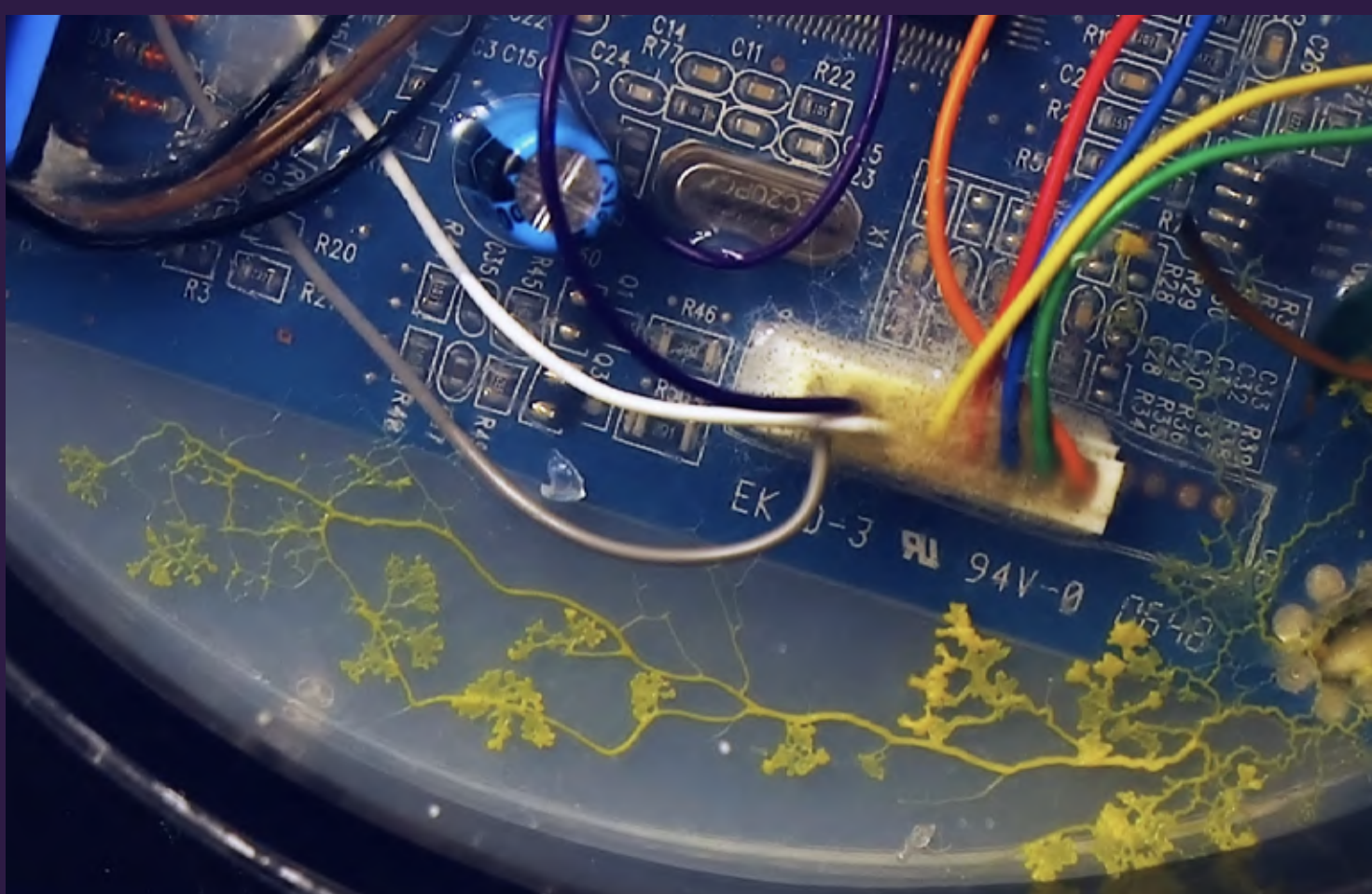
vimeo.com/neometa/metanature-in-between

MetaNature: Film + Soundscape-1

vimeo.com/neometa/metanature



Interactive Audioreactive Installation
vimeo.com/neometa/metanature-installation



Slime Microscopy
TimeLapses, experimentation

MATTERING HAIKU **Origins & Ambiguities**

Through transdisciplinary experimentation, this piece engages practically and conceptually with a range of questions exploring our definitions of life and living matter, the forces that drive the flow of energy, and the origins of intelligence. It's a multi-layered exploration of life's origins, blending poetry, audiovisual storytelling, and microbiology experimentation, made in collaboration with Juliet Williams during the Mattering Life Scientist in Residence.

Each haiku serves as a poignant snapshot, distilling complex scientific concepts into poetic verses that evoke wonder and contemplation. Accompanying the poetry is a fluid abstract narrative, weaving together imagery of the microscopic life forms, non-life and beyond. This sensory journey transports viewers through the eons, inviting them to ponder the interconnectedness of all living beings.

RESIDENCY | AUDIOVISUAL MEDIA ART | PERFORMANCE & POETRY | COLLABORATION | MICROSCOPY

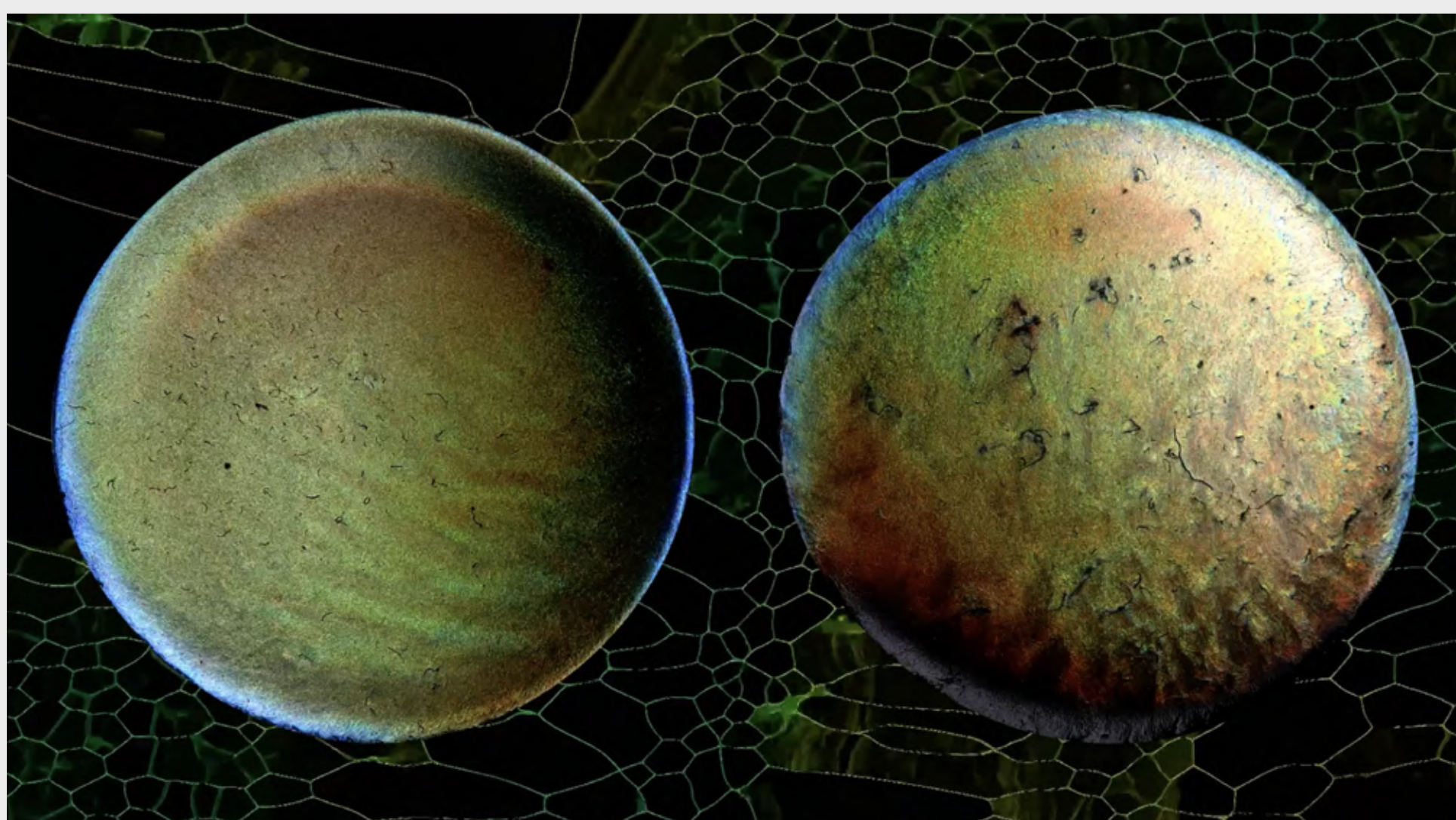
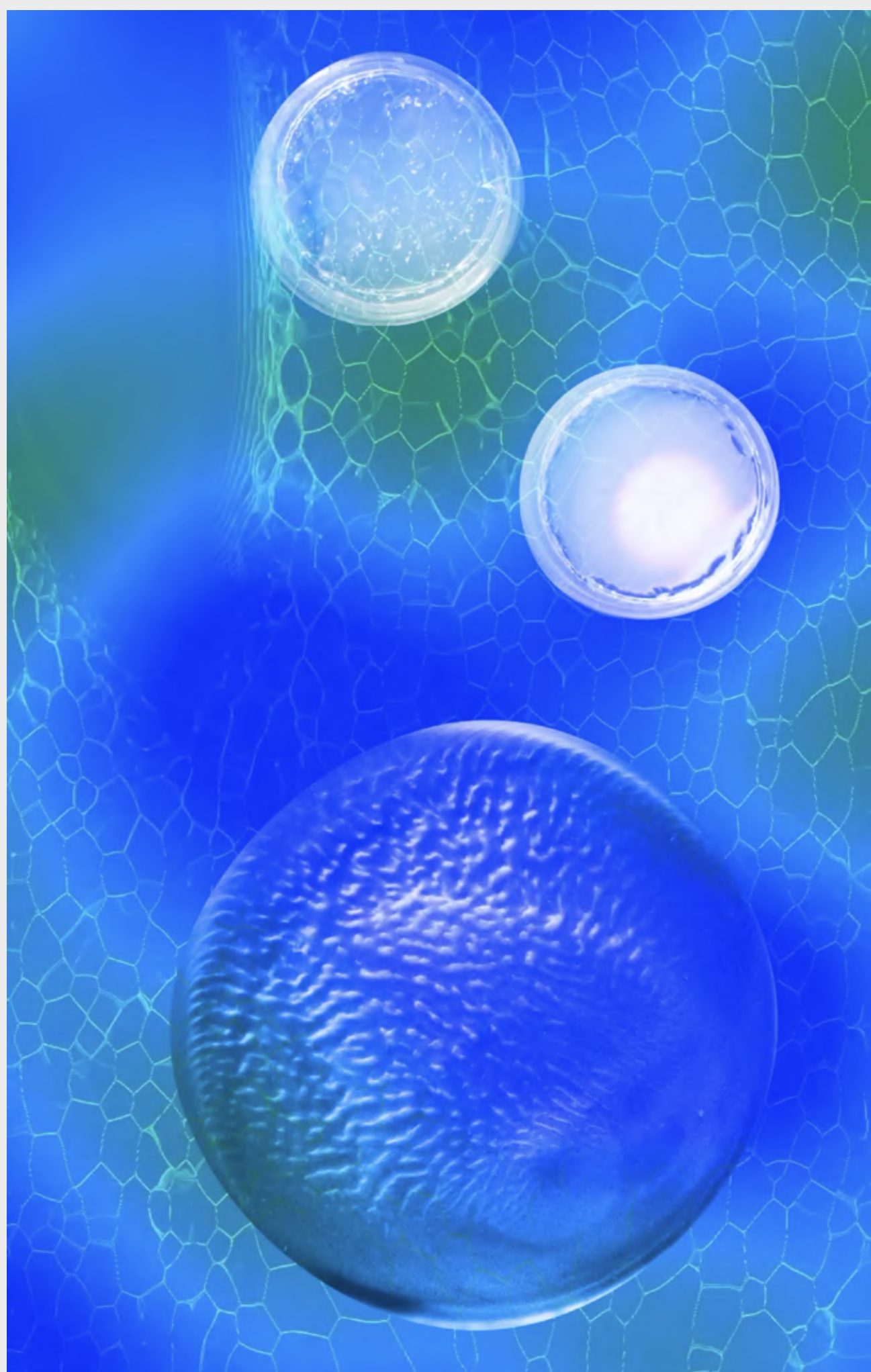
Mattering Haiku: Film + Poetry Collab

vimeo.com/neometa/mattering-haiku

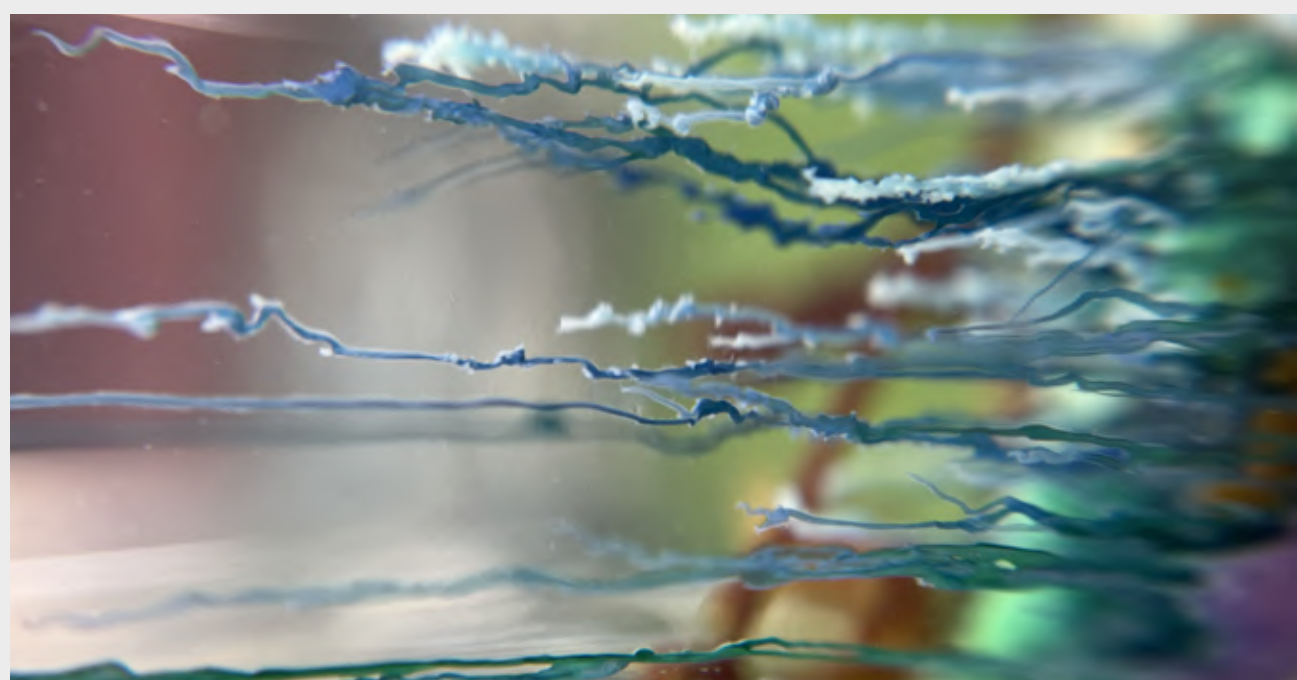
Holograms of Life & Non-life: Video Rec.

vimeo.com/neometa/holograms-nonlife

Mattering Haiku
Audiovisual Film: Poetry, New Media & Microscopy | Haiku by Juliet Williams



Chemical Gardens & Microscopy
Video & Timelapses from Growth Lab, CSM



META_LIFE Return to Oneness

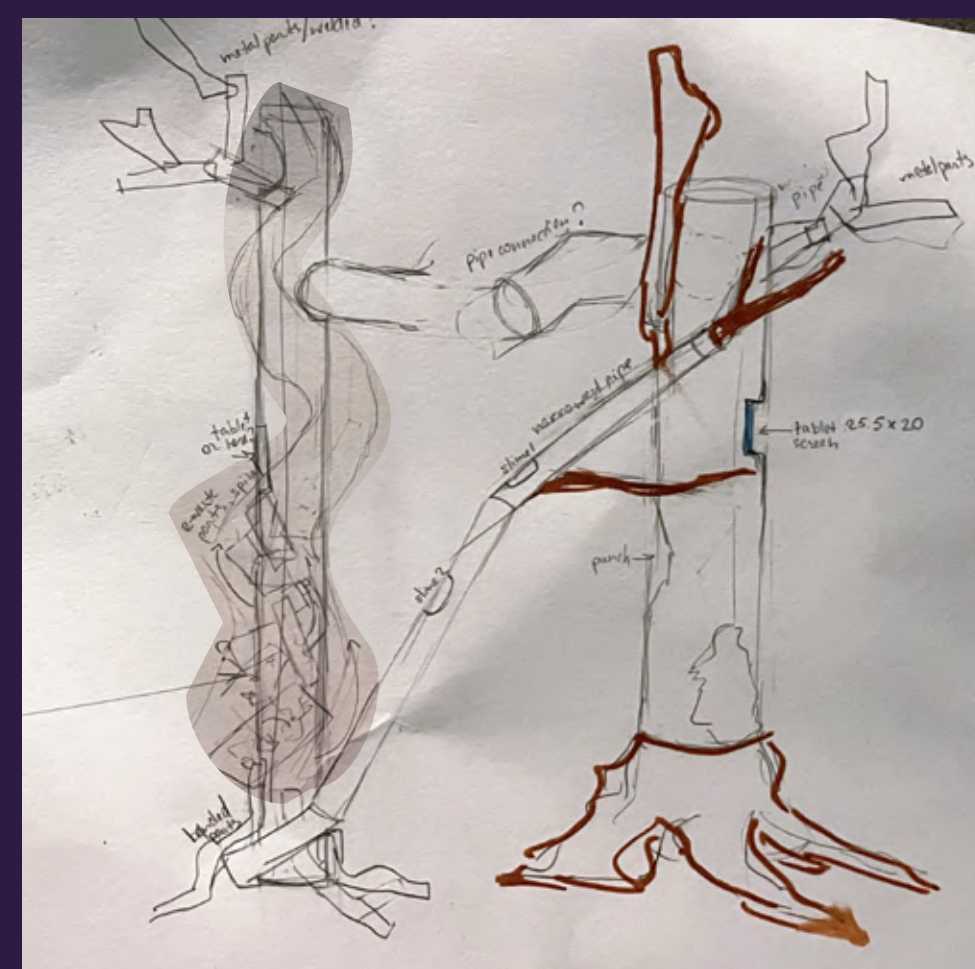
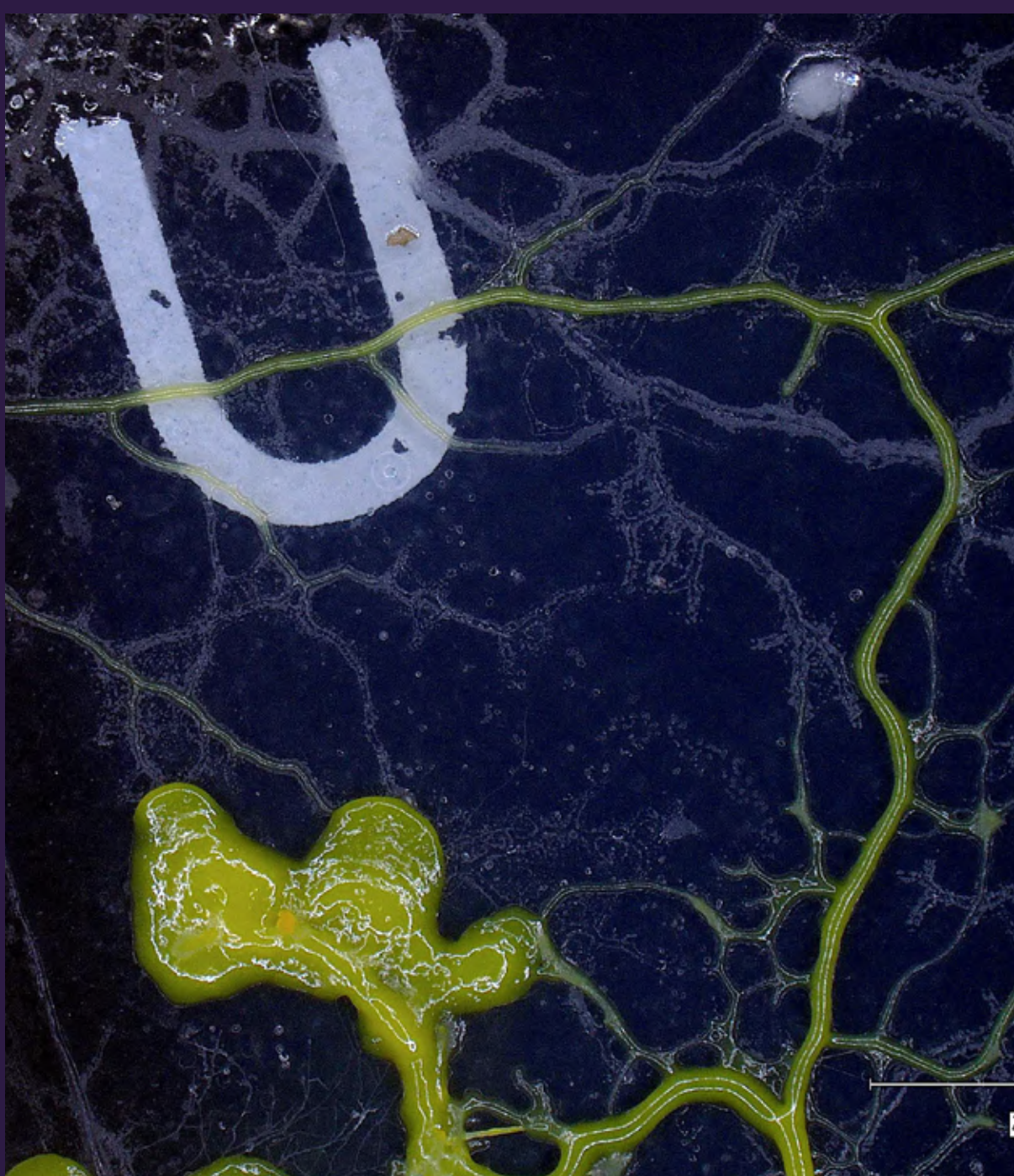
Immersive journey into a speculative future where humanity, technology, and nature converge in a dynamic symbiosis. This multimedia installation unfolds as a visual & auditory exploration of the intricate connections between living organisms, discarded technology, & the ever-changing landscape of our planet. Combining media art, installation from fallen tree parts, discarded metal & tech, generative & environmental sound and interactivity, "MetaLife" offers to rethink our relationship with the natural world and envision an ecosystem where coexistence & collaboration thrive. It is a speculative metaphor on the potential trajectories of our collective evolution, fostering empathy towards the future. Imagine a world where 'trees' are growing upside down, as metal beings from the roots of the past where Nature existed... Listen to the interactive interspecies communication of the sonified slime journey on the discarded tech fossils followed by narratives of the ecosystems, redefined by humans...

SLIME MOULD + DISCARDED TECH | INSTALLATION FROM DISCARDED METAL + FALLEN TREES | AUDIOVISUAL ART + FILM | SLIME SONIFICATION + INTERACTIVITY | BIOACOUSTICS | MICROSCOPY | MIXED REALITY

Human SOS: Slime On Discarded Tech
vimeo.com/neometa/human-sos-slime-timelapse

Installation + AR, Sound, Film: Making of
vimeo.com/neometa/metallife-installation

Slime Timelapsing + Sonification
Art/science collab: Shem Johnson, Kevin Terretaz



- This is a project in development:
- 3-part installation from discarded metal and tech + branches & tree root;
 - Interactive soundscape from environmental field recordings + slime mould sonification;
 - Augmented Reality of 3D-scanned fallen trees as a part of physical installation, as Instagram-filter;
 - Slime mould timelapse + film based on video & microscopy research